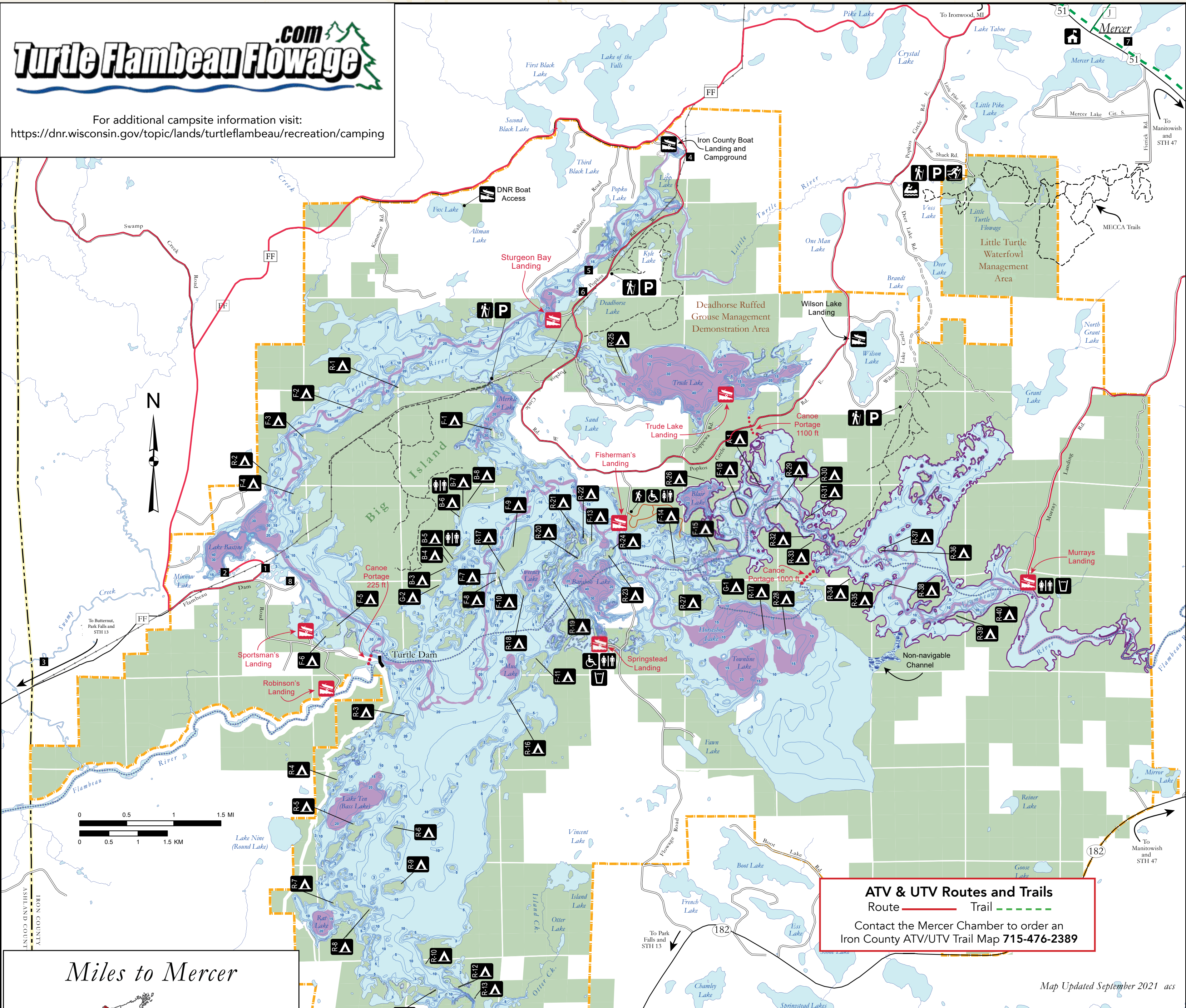


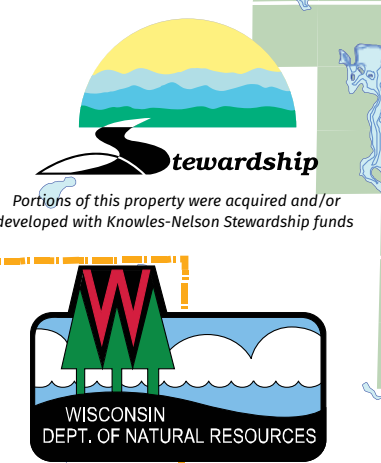
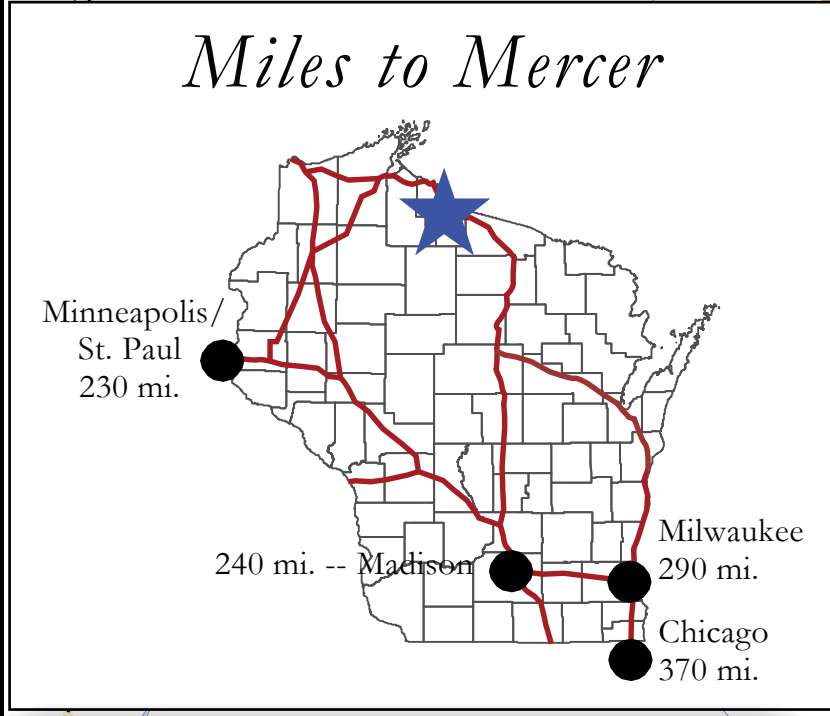
Turtle Flambeau Flowage

For additional campsite information visit:
<https://dnr.wisconsin.gov/topic/lands/turtleflambeau/recreation/camping>



ATV & UTV Routes and Trails
 Route ——— Trail - - - - -
 Contact the Mercer Chamber to order an
 Iron County ATV/UTV Trail Map 715-476-2389

Map Updated September 2021 acs



NATIONAL WEATHER SERVICE WARNINGS
 For updated weather information, tune to local radio stations **WCQM 98.3 FM** or **WMQA 96 FM** or weather band radio. Staff is not on duty 24 hours a day, and staff that is on duty will not be able to contact all visitors. **Pay attention to the weather.** In case of severe storms, use picnic tables or the toilet buildings as shelter.

Property Facilities Campsite Flowage Boat Access Canoe Access Trailhead Accessible Facility Vault Toilet Drinking Water Cross-country Ski Trail Parking Mercer Ranger Station	Public Land Management DNR Managed Land Turtle-Flambeau Scenic Waters Area Boundary County Boat Access	Water Features Voluntary Quiet Area Original Lakes and Channels Open Water
Trails Hiking/Nature Trail Hunter Walking Trail (Closed to motor vehicles) Canoe Route (Suggested)	Roads Major Road Improved Secondary Road Unimproved Secondary Road Electric Transmission Powerline	

Designated public use areas, in conformance with s. 23.155, Wis. Stats., are depicted on this property map.

NOTE: All campsites are surrounded by a 100-yard no firearm discharge buffer area.

*Reservable Site		Campsite	GPS Coordinates
A1 - Handicap Site	N 46° 05.857' W 090° 08.515'	F9 - Long Island Family Site	N 46° 05.322' W 090° 11.655'
B3 - Big Island South *	N 46° 05.130' W 090° 12.551'	F10 - Hotdog Island (Hungry Hill)	N 46° 04.959' W 090° 11.809'
B4 - Big Island South *	N 46° 05.141' W 090° 12.504'	F11 - North Crow's Nest	N 46° 04.249' W 090° 11.356'
B5 - Big Island South *	N 46° 05.180' W 090° 12.503'	F12 - Weber Bluff	N 46° 05.107' W 090° 11.198'
B6 - Big Island North *	N 46° 05.606' W 090° 12.366'	F13 - Boy Scout Main Site	N 46° 05.307' W 090° 10.601'
B7 - Big Island North *	N 46° 05.664' W 090° 12.340'	F14 - Lower Basketball	N 46° 05.109' W 090° 09.530'
B8 - Big Island North *	N 46° 05.704' W 090° 12.346'	F15 - Governor's Site	N 46° 05.222' W 090° 08.976'
F1 - Balfour Island	N 46° 06.354' W 090° 11.961'	F16 - Burned Stump	N 46° 05.555' W 090° 08.583'
F2 - Donut Lake	N 46° 06.528' W 090° 13.626'	F17 - Sailboat	N 46° 06.740' W 090° 08.296'
F3 - Turtle Channel	N 46° 06.292' W 090° 14.452'	G1 - Redeye Bay	N 46° 04.988' W 090° 08.788'
F4 - Turtle Lake	N 46° 05.775' W 090° 14.521'	G2 - Camp Walter	N 46° 04.977' W 090° 12.584'
F5 - Sportsmans East	N 46° 04.556' W 090° 13.975'	R1 - Site of Lost Soles	N 46° 06.740' W 090° 13.211'
F6 - Sportsmans West	N 46° 04.510' W 090° 14.114'	R2 - The Final Site	N 46° 05.934' W 090° 14.902'
F7 - Hotdog Island (Hungry Hill)	N 46° 05.066' W 090° 11.847'	R3 - Dam Site	N 46° 03.696' W 090° 13.148'
F8 - Hotdog Island (Hungry Hill)	N 46° 04.961' W 090° 11.898'	R4 - Bottle Neck	N 46° 03.096' W 090° 13.981'
R6 - Druid	N 46° 02.687' W 090° 13.232'	R5 - Bride Of Well Point	N 46° 02.713' W 090° 13.736'
R7 - Rat Lake	N 46° 01.950' W 090° 13.989'	R6 - Druid	N 46° 02.687' W 090° 13.232'
R8 - Italy Kickin' Sicily	N 46° 01.911' W 090° 13.504'	R7 - Rat Lake	N 46° 01.950' W 090° 13.989'
R9 - Karl's Spot	N 46° 02.160' W 090° 13.092'	R8 - Italy Kickin' Sicily	N 46° 01.911' W 090° 13.504'
R10 - Cathedral Ceiling	N 46° 01.441' W 090° 12.811'	R9 - Karl's Spot	N 46° 02.160' W 090° 13.092'
R11 - First Grassy	N 46° 01.184' W 090° 12.644'	R10 - Cathedral Ceiling	N 46° 01.441' W 090° 12.811'
R12 - Second Grassy	N 46° 01.127' W 090° 12.213'	R11 - First Grassy	N 46° 01.184' W 090° 12.644'
R13 - Cliff Dwellers	N 46° 00.994' W 090° 12.144'	R12 - Second Grassy	N 46° 01.127' W 090° 12.213'
R14 - Doc's Place	N 46° 00.908' W 090° 12.385'	R13 - Cliff Dwellers	N 46° 00.994' W 090° 12.144'
R15 - Picture Point	N 46° 00.625' W 090° 12.041'	R14 - Doc's Place	N 46° 00.908' W 090° 12.385'
R16 - Crow's Nest	N 46° 03.858' W 090° 11.695'	R15 - Picture Point	N 46° 00.625' W 090° 12.041'
R17 - Channel Site	N 46° 05.011' W 090° 11.795'	R16 - Crow's Nest	N 46° 03.858' W 090° 11.695'
R18 - White Birch	N 46° 04.803' W 090° 11.495'	R17 - Channel Site	N 46° 05.011' W 090° 11.795'
R19 - Monica's Hide-a-way	N 46° 04.960' W 090° 11.118'	R18 - White Birch	N 46° 04.803' W 090° 11.495'
R20 - Boy Scout Back Bay	N 46° 05.168' W 090° 10.822'	R19 - Monica's Hide-a-way	N 46° 04.960' W 090° 11.118'
R21 - Isthmus	N 46° 05.341' W 090° 10.777'	R20 - Boy Scout Back Bay	N 46° 05.168' W 090° 10.822'
R22 - Seldom Used	N 46° 05.332' W 090° 10.690'	R21 - Isthmus	N 46° 05.341' W 090° 10.777'
R23 - Poison Ivy	N 46° 05.162' W 090° 10.387'	R22 - Seldom Used	N 46° 05.332' W 090° 10.690'
R24 - Big Tree Prehistoric	N 46° 05.267' W 090° 10.323'	R23 - Poison Ivy	N 46° 05.162' W 090° 10.387'
R25 - Trude Lake	N 46° 06.868' W 090° 10.123'	R24 - Big Tree Prehistoric	N 46° 05.267' W 090° 10.323'
R26 - Blair Lake	N 46° 05.861' W 090° 09.034'	R25 - Trude Lake	N 46° 06.868' W 090° 10.123'
R27 - Zeldia's	N 46° 04.812' W 090° 08.965'	R26 - Blair Lake	N 46° 05.861' W 090° 09.034'
R28 - University Of Chicago	N 46° 04.469' W 090° 08.058'	R27 - Zeldia's	N 46° 04.812' W 090° 08.965'
R29 - Hemlock	N 46° 05.670' W 090° 08.136'	R28 - University Of Chicago	N 46° 04.469' W 090° 08.058'
R30 - Shore Lunch	N 46° 05.625' W 090° 07.777'	R29 - Hemlock	N 46° 05.670' W 090° 08.136'
R31 - Big White Pine	N 46° 05.539' W 090° 07.807'	R30 - Shore Lunch	N 46° 05.625' W 090° 07.777'
R32 - Campers From Hell	N 46° 05.454' W 090° 07.711'	R31 - Big White Pine	N 46° 05.539' W 090° 07.807'
R33 - New Challenge	N 46° 05.327' W 090° 07.676'	R32 - Campers From Hell	N 46° 05.454' W 090° 07.711'
R34 - Grandma & Grandpa	N 46° 04.929' W 090° 07.118'	R33 - New Challenge	N 46° 05.327' W 090° 07.676'
R35 - Fish Net	N 46° 05.066' W 090° 06.988'	R34 - Grandma & Grandpa	N 46° 04.929' W 090° 07.118'
R36 - Three Oak Back Site	N 46° 05.265' W 090° 06.760'	R35 - Fish Net	N 46° 05.066' W 090° 06.988'
R37 - Three Oak	N 46° 05.230' W 090° 06.720'	R36 - Three Oak Back Site	N 46° 05.265' W 090° 06.760'
R38 - Breezy Point	N 46° 04.944' W 090° 06.633'	R37 - Three Oak	N 46° 05.230' W 090° 06.720'
R39 - Back Bone	N 46° 04.683' W 090° 05.719'	R38 - Breezy Point	N 46° 04.944' W 090° 06.633'
R40 - Stove Parts Site	N 46° 04.727' W 090° 05.364'	R39 - Back Bone	N 46° 04.683' W 090° 05.719'

Boat Landing	GPS Coordinates
Fisherman's Landing	N 46° 05.516' W 090° 10.200'
Murray's Landing	N 46° 04.916' W 090° 04.793'
Sportsman's Landing	N 46° 04.437' W 090° 14.347'
Springstead Landing	N 46° 04.402' W 090° 10.428'
Sturgeon Bay Landing	N 46° 07.414' W 090° 11.089'
Trude Lake Landing	N 46° 06.607' W 090° 08.865'

- DONNER'S BAY RESORT
- FLAMBEAU VISTA RETREAT, LLC
- MIDWAY BAR
- GATEWAY LODGE & RESORT
- PINEWOOD COTTAGE
- DEADHORSE LODGE, LLP AND
- SUNKEN HORSE SALOON
- BOBBER DOWN GUIDE SERVICE
- RANDY'S FLOWAGE VIEW